

# Essentials

## Easy Living - Key Inclusions

- 25 Year Structural Guarantee
- Fixed Price Contract  
[excl. Rock Removal - subject to soil test]
- European Stainless Steel Appliances
- 20mm Stone Benchtop to Kitchen
- LED Downlights throughout  
[as per electrical plan]
- Ducted Heating
- Flyscreens to openable windows
- Floor Coverings
- Sectional Door to Garage with Remote Control [as per plan]
- Coloured Concrete to Driveway

Plus more!

# House & Land Package

## \$574,340

Senna 20 Suits 10.5m Width Lot



3



2



2

Lot 136 Marlee Drive Plumpton 3335

### House Size Total Area

19.58 sq

181.91 m2



Consultant | Ashley

M | 0455 880 225

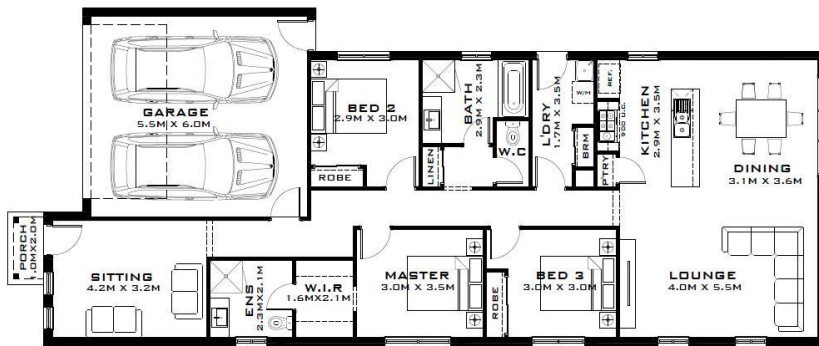
Melbourne Metro Team

**Homes Land Finance**

Training and Development

[sales@homeslandfinance.com](mailto:sales@homeslandfinance.com)

[www.homeslandfinance.com](http://www.homeslandfinance.com)



**DISCLAIMER** – All photos, pictures, plans and creative works remain copyright to their respective owners, are for illustrative purposes only and may not represent the final product. Measurements may vary from the final contract documentation and should be verified with the Builder. Home package price is based on the lowest priced facade from the Builder's range unless otherwise noted. Included items may have an allowance amount, all costs should be verified with the Builder. Home designs, inclusions, specification, promotion and pricing may be subject to change without notification. Pricing is subject to land availability (when advertised as house and land package), Developer's final approval, Council and Town Planning regulations (whichever is applicable). Home may not necessarily fit the nominated \*frontage due to land conditions and regulations. Home package may not be available in some areas due to Builder's geographic restrictions. Although due care has been taken in the preparation of this Template, Homes Land Finance Training and Development ABN 52 443 712 199 makes no warranty on the accuracy and completeness of information contained herein and will not be held responsible for any damages or losses incurred by any party whatsoever. Homes Land Finance Training and Development ABN 52 443 712 199 does not provide advice and acts as an agent for the Builder. All information should be verified with the Builder. Please read the full terms and conditions and privacy policy on our website [www.homeslandfinance.com](http://www.homeslandfinance.com) Template created Jun-18.